

50 BLUES JAM TRACKS

CHART BY GRIFF HAMLIN

2 BEAT SWING.MP3

G G#DIM7 AMIN7 D7 G G#DIM7 AMIN7 D7

G G7 C G B7 E7

A7 D7 G G7 C G

G E7 AMIN D7 G C C#DIM7

G G#DIM7 AMIN7 D7

G G#DIM7 AMIN7 D7 G G#DIM7 AMIN7 D7

12 BAR BLUES GROOVE.MP3

G7 C9 G7 C9

2

Chord progression for a 2-measure blues progression in G major:

- Staff 1: G7, D7#9
- Staff 2: C9, G7, D7#9

12 BAR BOOGIE IN A 160BPM.MP3

Chord progression for a 12-bar boogie in A major:

- Staff 1: A, D7
- Staff 2: A, E7#9
- Staff 3: A

BACKING TRACK - SHUFFLE BLUES IN A.MP3

Chord progression for a shuffle blues backing track in A major:

- Staff 1: A, D7
- Staff 2: A, E7

D7 A E7 3

BASICBLUESROCK_IN A.MP3

A7 D9

A7 E7#9

D9 A7

BLUES HI SHUFFLE G.MP3

G7 C7

G7 D7

C7 G7 D7

BLUES MIDTEMPO SHUFFLE IN E AT 128BPM.MP3

BLUES ROCK 60'S IN A 110BPM.MP3

E A BMIN E 5

BLUES STOMP IN G

G7

BLUES_COMPLEXCHORD IN G.MP3

E D C#7 F#7 B7 E7 E D C#7 F#7 B7 E7

A7 A#DIM7 E D C#7 F#7 B7 E7 F#7 B7 E7

BLUES_SWEETDREAMS IN G.MP3

G A7 D G

A7 D G C

6

G EMIN G C

G D G C G D

BLUESTAZZGROOVEING.MP3

G⁷

BMIN B^bMIN AMIN

BMIN B^bMIN AMIN G⁷

BLUESROCK IN A 166 BPM FOR PENTAT.MP3

A G C D A G C D A

G C D A G C D A F

A E7#9 A 7

BLUESROCK IN A.MP3

A7 D7

A7 E7

D9 A7 E7

BLUESHUFFLEIN A.MP3

A7 D7

A7 E7

8

D⁹

A⁷

E⁷



BOOGIE IN E.MP3

E

A

G

E

A

G

E



A

G

E

A

G

E

A

G



E

A

G

E

A

G

E



A

G

D

E

D

E



D

E

D

E



BRITBLUESBOOMING.MP3

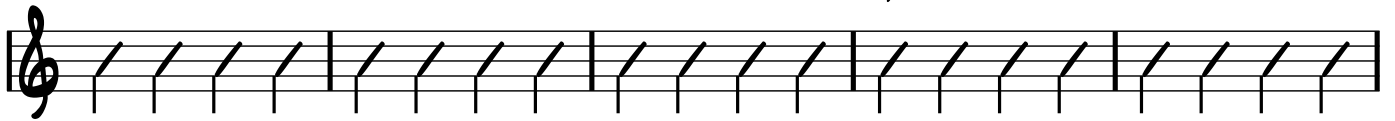
G⁷





C7

G7



D7

C7

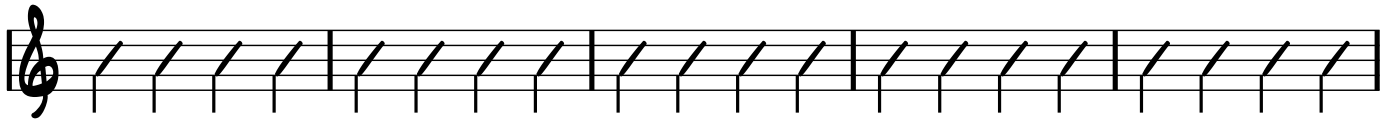
G7



CHICAGO BLUES_MIDFAST_TEMPO_IN_A_120BPM.MP3

A7

D7



A7

E7



D9

A7

E7



COUNTRY ROCK MID-TEMP IN G.MP3

Chord progression for Country Rock Mid-Temp in G:

- Staff 1: G, C, G
- Staff 2: D, G
- Staff 3: C, G, D, G
- Staff 4: C, D, G, EMIN
- Staff 5: C, D, G

The notation consists of five staves, each with a treble clef and a series of rhythmic slashes representing guitar chords. The chords are indicated by letters above the staves.

COUNTRY SHUFFLE.MP3

Chord progression for Country Shuffle:

- Staff 1: A^{MIN}7, E7, F, D7, C
- Staff 2: G, C, G, C, C

The notation consists of two staves, each with a treble clef and a series of rhythmic slashes representing guitar chords. The chords are indicated by letters above the staves.

F C A7 D7

G7 C E7 F D7

C G7 C F

G C F D7

G7 C E7 F

D7 C G7 C

EVEN 8THS BLUES.MP3

GMIN7 C9

G^{MIN7}

D^{7#9}

Two staves of guitar notation. The first staff has a treble clef and contains four measures of slash marks. Below the first measure is the label **C⁹**, and below the second measure is **G^{MIN7}**. The second staff also has a treble clef and contains four measures of slash marks, ending with a repeat sign.

FUNKEDELIC JAM 2.MP3

E^{MIN7} A⁷ E^{MIN7} A⁷ E^{MIN7} A⁷ E^{MIN7} A⁷ E^{MIN7} A⁷ E^{MIN7} A⁷

A single staff of guitar notation with a treble clef, containing four measures of slash marks corresponding to the first line of chords.

E^{MIN7} A⁷ E^{MIN7} A⁷ E^{MIN7} A⁷ E^{MIN7} A⁷ E^{MIN7} A⁷ E^{MIN7} A⁷

A single staff of guitar notation with a treble clef, containing four measures of slash marks corresponding to the second line of chords.

E^{MIN7} A⁷ E^{MIN7} A⁷ E^{MIN7} A⁷ E^{MIN7} A⁷ E^{MIN7} A⁷ E^{MIN7} A⁷

A single staff of guitar notation with a treble clef, containing four measures of slash marks corresponding to the third line of chords.

E^{MIN7} A⁷ E^{MIN7} A⁷ E^{MIN7} A⁷ E^{MIN7} A⁷ E^{MIN7} A⁷ E^{MIN7} A⁷

A single staff of guitar notation with a treble clef, containing four measures of slash marks corresponding to the fourth line of chords.

E^{MIN7} A⁷ E^{MIN7} A⁷ E^{MIN7} A⁷ A⁷ C B^{MIN}

A single staff of guitar notation with a treble clef, containing four measures of slash marks corresponding to the fifth line of chords.

E^{MIN7} C B^{MIN} E^{MIN7} C B^{MIN}

A single staff of guitar notation with a treble clef, containing four measures of slash marks corresponding to the sixth line of chords.

E_{MIN}⁷

C

B_{MIN}

E_{MIN}⁷



FUNKEDELIC JAM 3.MP3

E_{MIN}⁷



A⁷



B⁷



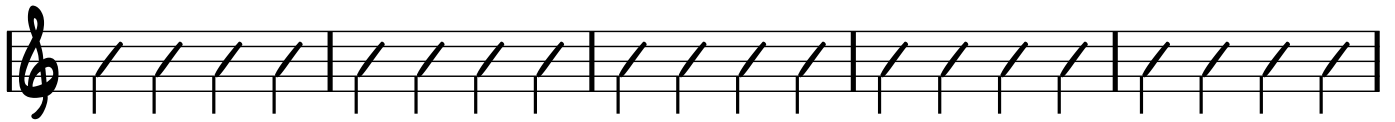
FUNKEDELIC JAM.MP3

C⁹





F⁹

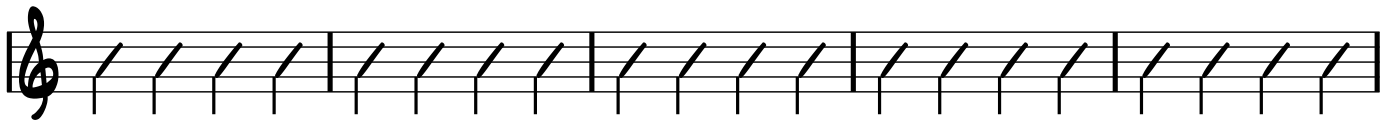


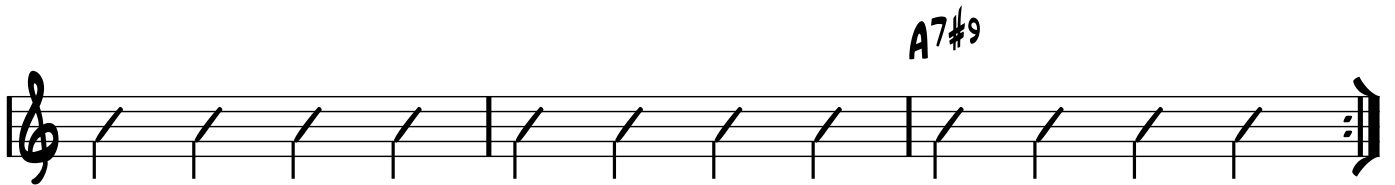
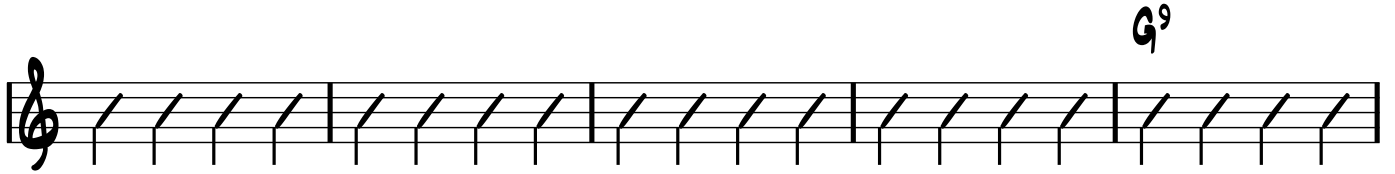
G⁹



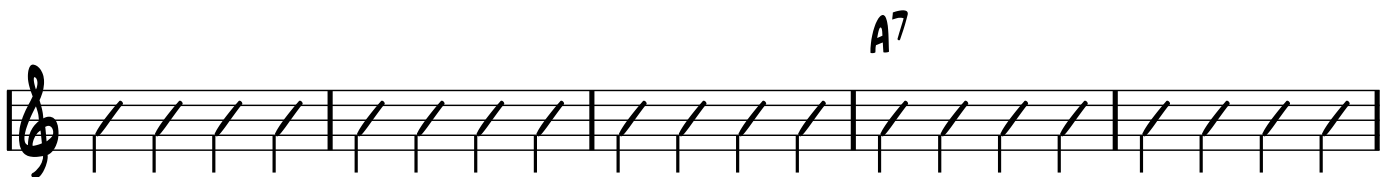
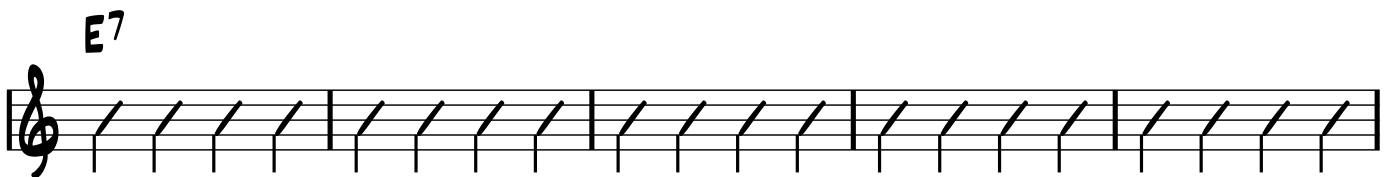
FUNKY BLUES V.2.MP3

D⁹





HEAVY LIVE ROCK IN E 90BPM.MP3



16

A7

E7



HEAVY ROCK IN G MIN 190BPM_GREATFOR_TAPPING.MP3

GMIN



GMIN

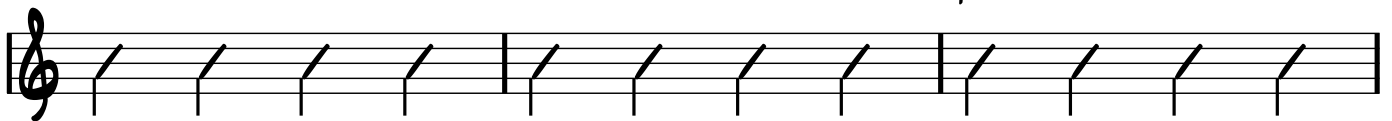
DMIN



Bb

C

GMIN



DMIN

Bb

C



HI_HOWLONG_CMIN.MP3

Bb11

Bb

Bb11

Bb

Bb11



Bb

Bb11

Bb

Bdim7

Cmin7

Gmin7



JAZZY BLUES_G PENTATONIC AND G MIXOLYDIAN.MP3

G⁷ C/G G⁷ G⁷ C/G G⁷ G⁷
 C/G G⁷ G⁷ F G⁷ C/G G⁷
 G⁷ C/G G⁷ G⁷ C/G G⁷ G⁷
 C/G G⁷ G⁷
 F

JAZZY BLUES_JAMMING TRACK 2.MP3

EMIN⁷ AMIN⁷ BMIN⁷ EMIN⁷ AMIN⁷ BMIN⁷ EMIN⁷
 AMIN⁷ BMIN⁷ EMIN⁷ AMIN⁷ BMIN⁷ CMAT⁷ BMIN⁷

E_{MIN}⁷ **C_{MAJ}⁷**

B_{MIN}⁷ **A_{MIN}⁷** **B_{MIN}⁷**

JAZZY BLUES_JAMMIN TRACK 3.MP3

E₇^{#9}

F_#⁷

C_{MAJ}⁷

D

JAZZY BLUES JAMMING TRACK 5.MP3

C_#_{MIN}⁷ **A**

C7 F7

D7 G7#9

The first staff contains four measures of guitar notation, each with a slash mark on the string. Above the first measure is the chord label 'C7' and above the fourth measure is 'F7'. The second staff also contains four measures of guitar notation with slash marks. Above the second measure is 'D7' and above the fourth measure is 'G7#9'. The staff ends with a double bar line and repeat dots.

MID FUNKY BLUES IN A.MP3

A7 D9

A7 E7

D7 A7 E7

The first staff contains four measures of guitar notation with slash marks. Above the first measure is 'A7' and above the fourth measure is 'D9'. The second staff contains four measures of guitar notation with slash marks. Above the second measure is 'A7' and above the fourth measure is 'E7'. The third staff contains four measures of guitar notation with slash marks. Above the first measure is 'D7', above the second is 'A7', and above the fourth is 'E7'. The staff ends with a double bar line and repeat dots.

ROCK FUNK FRENZY (IN EM).MP3

EMIN7

AMIN7 CMAT7

The first staff contains four measures of guitar notation with slash marks. Above the first measure is the chord label 'EMIN7'. The second staff contains four measures of guitar notation with slash marks. Above the third measure is 'AMIN7' and above the fourth measure is 'CMAT7'. The staff ends with a double bar line and repeat dots.

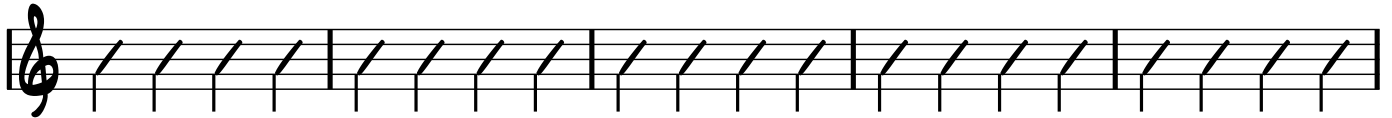
22

E^{MIN}7

B^{MIN}

A^{MIN}7

B^{MIN}7



C^{MAJ}7

E^{MIN}7



SLOW BLUES CORPSE.MP3

G⁷

C⁹

G⁷

C⁹



G⁷

D⁹



C⁹

G⁷

D⁷#⁹



SLOW BLUES G MIN - BASED ON KING ALBERT.MP3

G^{MIN}



C^{MIN}7



G^{MIN} B^b

C D7#9

SLOW BLUES IN A.MP3

A⁷ D⁷

A⁷ E⁷

D⁷ A⁷ E⁷

SLOW HEADBANGER.MP3

E⁵ A⁵

E⁵ B⁵

24

A⁵

E⁵



SLOWBLUES IN E 70.MP3

E⁷

A⁷



E⁷

B⁷



A⁷

E⁷

B⁷



SOUL_FUNK JAM IN C MINOR 120BPM.MP3

C^{MIN}

F^{MIN}

C^{MIN}

F^{MIN}

C^{MIN}



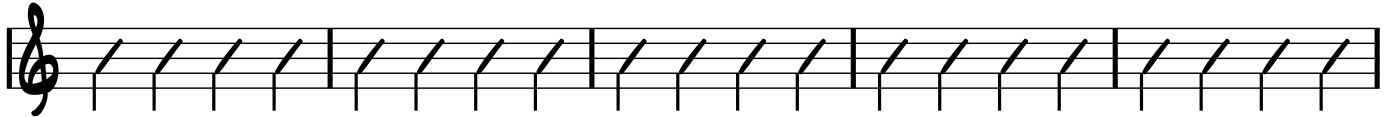
F^{MIN}

C^{MIN}

F^{MIN} G^{7#9}

C^{MIN}

F^{MIN}



C^{MIN}

F^{MIN}

C^{MIN}

F^{MIN}

C^{MIN}



SOULKEYOFD.MP3

D G D

A musical staff with a treble clef. It contains four measures of rhythmic notation, represented by diagonal slashes. Above the first measure is the chord 'D', above the second is 'G', and above the third is 'D'. The fourth measure is empty.

G D

A musical staff with a treble clef. It contains four measures of rhythmic notation. Above the second measure is the chord 'G' and above the third is 'D'. The first and fourth measures are empty.

G D G

A musical staff with a treble clef. It contains four measures of rhythmic notation. Above the first measure is the chord 'G', above the second is 'D', and above the third is 'G'. The fourth measure is empty.

A G

A musical staff with a treble clef. It contains four measures of rhythmic notation. Above the second measure is the chord 'A' and above the third is 'G'. The first and fourth measures are empty.

A G D

A musical staff with a treble clef. It contains four measures of rhythmic notation. Above the first measure is the chord 'A', above the second is 'G', and above the third is 'D'. The fourth measure is empty.

G

A musical staff with a treble clef. It contains three measures of rhythmic notation. Above the second measure is the chord 'G'. The first and third measures are empty.

D G

A musical staff with a treble clef. It contains three measures of rhythmic notation. Above the first measure is the chord 'D' and above the second is 'G'. The third measure is empty and ends with a double bar line.

STEADY BLUES JAM IN G_PERFECT FOR SLIDE_HARP PLAYERS.MP3

G^{MIN}

D⁷

C⁷ G⁷ D⁷

STEELY DAN IN E.MP3

E^{MIN7}

A^{MIN7} B^{MIN7} C^{MAJ7} B^{MIN7} E^{MIN7}

28

A^{MIN}7 B^{MIN}7 C^{MAJ}7 B^{MIN}7 E^{MIN}7

B⁷

UPTEMPO 16BARBLUESROCKKEYOFA.MP3

A⁷

D⁷

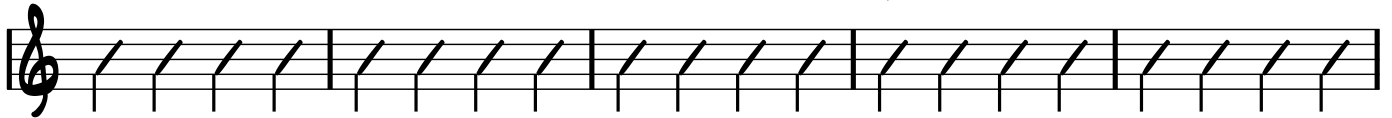
A⁷ E⁷

D⁷ A⁷

UPTEMPO BLUES SHUFFLE.MP3

D⁷

G⁷



D⁷

A⁷



G⁷

D⁷

A⁷



WALKING JAZZ.MP3

C⁷

F⁷

C⁷



F⁷

C⁷



D^{MIN7}

G^{7#9}

C⁷

A^{7#9}

D^{MIN7}

G^{7#9}



2SWINGINGBLUESINF.MP3

F⁷

F^{#DIM7}

G^{MIN7}

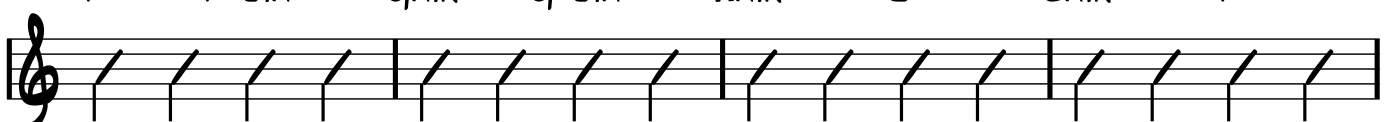
G^{#DIM7}

A^{MIN7}

D⁷

C^{MIN7}

F⁷



The image shows two staves of musical notation. Each staff begins with a treble clef and contains four measures of music, indicated by vertical bar lines. The notes in each measure are represented by diagonal slashes. Above the first staff, four chord symbols are written: B^b7 , B^b_{MIN} , A_{MIN} , and D^7 . Above the second staff, six chord symbols are written: G_{MIN}^7 , C^7 , F^7 , $F^{\#}_{DIM}^7$, G_{MIN}^7 , and C^7 . The second staff ends with a double bar line.

This chord sheet is created and compiled by Griff Hamlin.

He is a good friend of mine and the owner and author of the amazing course – [Playing Through The Blues](http://www.PlayingThroughTheBlues.com)

Show some love and check out his comprehensive blues guitar course at:

<http://www.PlayingThroughTheBlues.com>



Thousands of satisfied customers all agree that this blues package is truly exceptional, which is why it's so popular. The complete blues guitar learning course for intermediate and advanced musicians



Learn To Solo The Entire Fretboard Effortlessly & Master Blues Scales



How to improvise and really sound great over any blues tune at any time



How to grind through the greasiest Texas shuffle like you were born just outside of Dallas.



How to know the 3 chords in any blues tune, no matter what key, instantly. It's right there on your guitar plain as the nose on your face.

" Throw away all those books you bought in the past!!! This is the Real Deal!!! Finally found what I was looking for, Thanks!!". - David

Click Here To Download

This Method Is Guaranteed to Teach You Exactly What You Need To Master Blues Guitar...

- How To Use **Blues Scales** And Patterns To Create Truly Awe-Inspiring Solos.
- All The Cool Tricks You Need Including *Hammer-Ons*, *Pull-Offs*, *'Tweedlies'*, Even **Pinch Harmonics** That Will Make Billy Gibbons Stand Back.
- How To Learn By Actually **Soloing And Jamming**. This Will Totally *Maximize Your Progress* And Put You On The Fast Track Instantly.
- How To Think Like *Eric*, *BB*, *Stevie*, *Albert*, *Freddie*, *Buddy*, And Your Other Blues Heroes. Learn This Secret And They'll Be Calling YOU The Next **Blues Guitar God**.